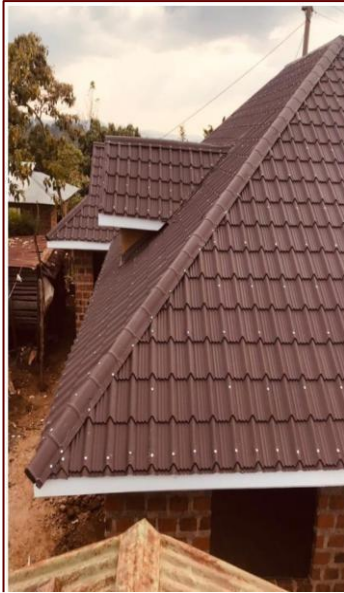


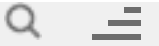


# SPACE MABATI AND STEEL LTD



## COMPANY PROFILE

Improving Lives



## About Us

Space Mabati and Steel Ltd supplies quality roofing sheets, structural steel, and interior finishing products. We are committed to transparent pricing, KEBS certified quality, and reliable delivery — consistently **Improving Lives**. Explore our wide range of durable products designed to meet your needs.

# WELCOME

## To Space Mabati

BUILD YOUR DREAM WITH US

Roofing Mabati

Stone-coated  
Roofing Tiles

PVC Gutters and  
Accessories

Roof Insulation

Gypsum Channels  
and Studs

Deformed Bars

Light Gauge Steel  
Trusses

Translucent Sheets

Steel tubes

[www.spacemabatianandsteel.co.ke](http://www.spacemabatianandsteel.co.ke)

# WHY SPACE MABATI?

Improving Lives, Local Excellence, Regional Strength.



**Wide Market Reach**



**Tailor-Made  
Fabrication**



**Commitment to  
Customer  
satisfaction**



**Guaranteed  
Quality Products**



**Flexible  
Payments  
Options**

# SPACE MABATI AND STEEL IN NUMBERS

**TRUST US**

With Your Roof

**10K+**

Tons of Steel  
Supplied

**100%**

KEBS Certified

**15 Yrs**

Limited Warranty

**5+**

Mabati Profiles

**100%**

Customer  
Satisfaction

**24-72**

We Deliver Within  
72 Hours

**10Mtrs**

Custom-Made Lengths

**100%**

Proudly Kenyan

# ROOFING PRODUCTS

AFFORDABLE PRICES

We offer different mabati profiles in Glossy and Matte Finish - Gauges 28 & 30 in various colors- Charcoal Grey, Chocolate, Maroon, Brick Red, Tile Red and Green.

**Coil** 1.0M  
**Overall width** 0.95M  
**Effective width** 0.9M  
**Max Length** 7M



**Space Romas Tile Profile**

**Coil** 1.0M  
**Overall width** 0.89M  
**Effective width** 0.77M  
**Max Length** 7M



**Space Z-mas Tile Profile**

**Coil** 1.0M  
**Overall width** 0.89M  
**Effective width** 0.80M  
**Max Length** 10M



**Space Brickmas Profile**



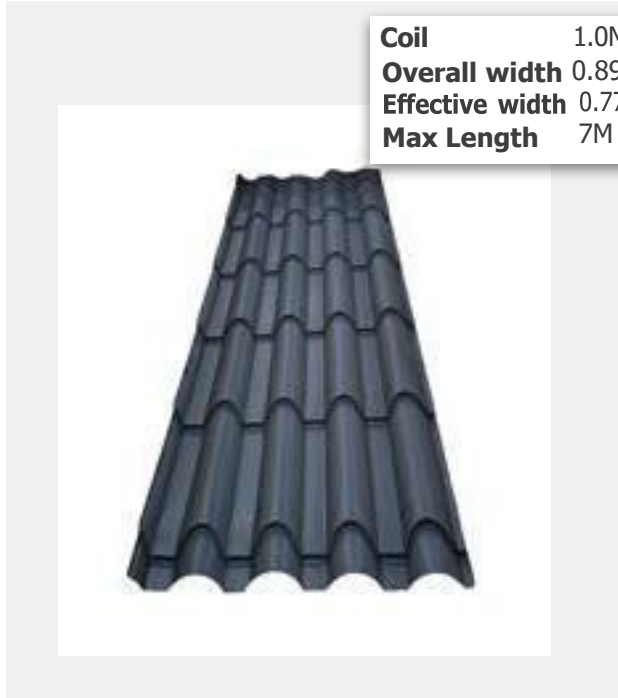
CUSTOM SIZES, KEBS APPROVED

[www.spacemabatiandsteel.co.ke](http://www.spacemabatiandsteel.co.ke)

# ROOFING PRODUCTS

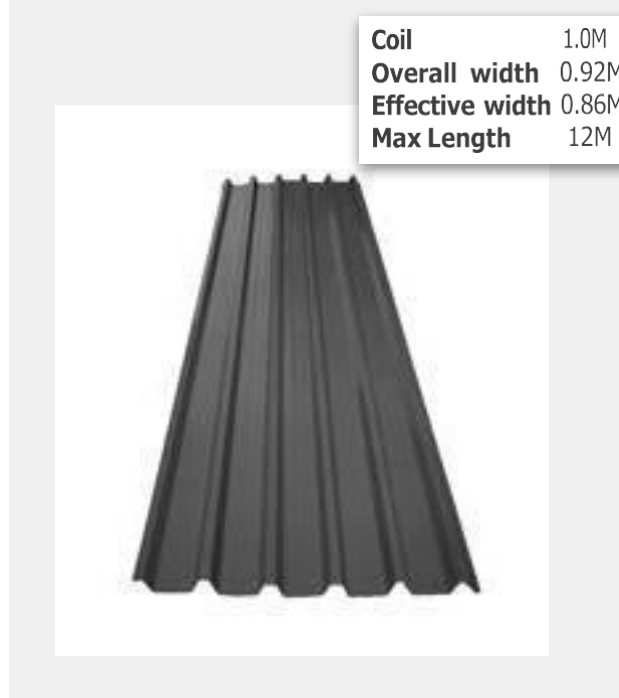
AFFORDABLE PRICES

We offer different mabati profiles in Glossy and Matte Finish - Gauges 28 & 30 in various colors- Charcoal Grey, Chocolate, Maroon, Brick Red, Tile Red and Green.



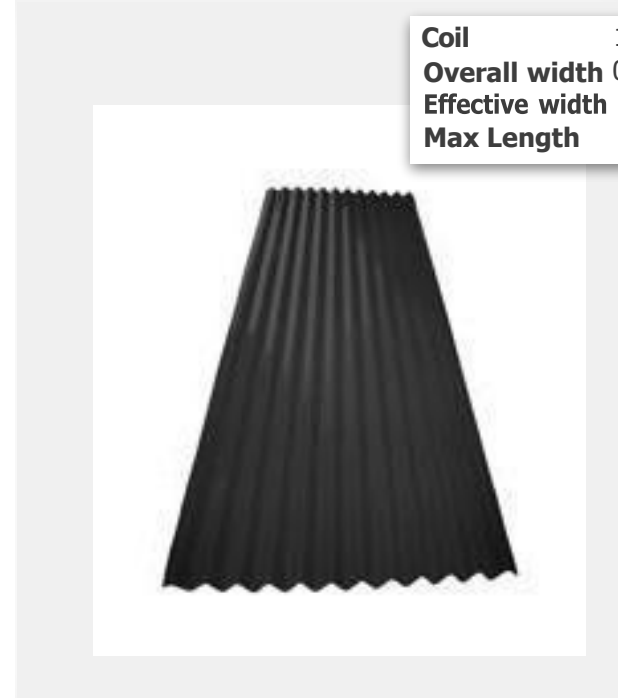
Coil	1.0M
Overall width	0.89M
Effective width	0.77M
Max Length	7M

Space Euromas tile Profile



Coil	1.0M
Overall width	0.92M
Effective width	0.86M
Max Length	12M

Space Boxmas Profile



Coil	1.0M
Overall width	0.91M
Effective width	0.84M
Max Length	9M

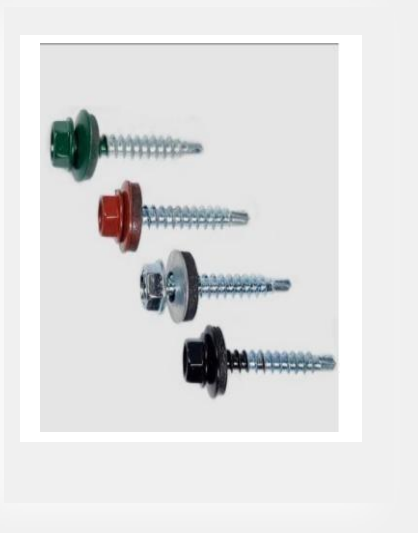
Space corrugated profile



CUSTOM SIZES, KEBS APPROVED

# ROOFING ACCESORIES

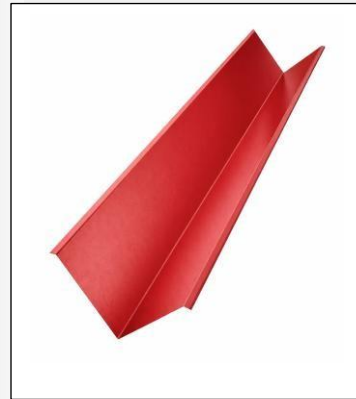
Accessories are essential finishing components that complete a professional, watertight and aesthetically pleasing roof installation. These ensure proper sealing at edges, joints and transitions.



SELF DRILLING NAILS



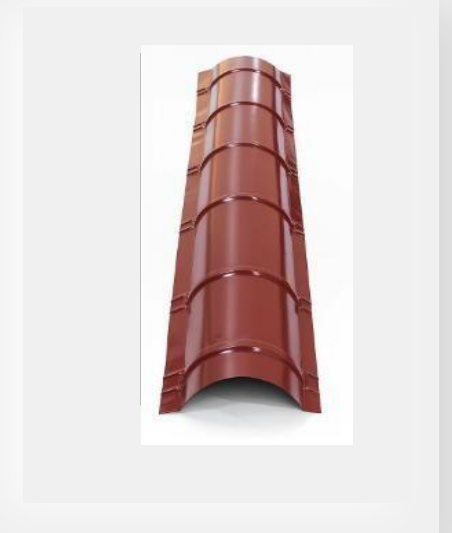
RIGDE CAPS



VALLEY TRAYS



COLOURED ROOFING NAILS



ROLL TOPS



CUSTOM SIZES, KEBS APPROVED

[www.spacemabatiandsteel.co.ke](http://www.spacemabatiandsteel.co.ke)

# STONE-COATED TILES

LONG-LASTING BEAUTY

Elegant, lightweight and incredibly durable tiles that combine the strength of steel with the aesthetic of traditional stone.

Panel Size 1340X420mm

Cover Size 1256X370mm

Panels/SQM Approx. 2.2 Pcs

Weight/PC 2.8 KGs



CLASSIC TILE



MILANO TILE



SHINGLES



CUSTOM SIZES, KEBS APPROVED

[www.spacemabatiandsteel.co.ke](http://www.spacemabatiandsteel.co.ke)

# PVC SOLUTIONS

AFFORDABLE PRICES

Our PVC gutters and accessories offer a modern, rust-free alternative to traditional metal gutters. They efficiently channel rainwater away from your building while resisting corrosion, cracking and discoloration.



GUTTERS



DOWNPIPES



FASCIA BRACKET



CUSTOM SIZES, KEBS APPROVED

# STEEL STRUCTURAL PRODUCTS

From light gauge steel trusses, reinforcement Bars to steel tubes, we've got you covered. Our steel structural lineup delivers high-performance solutions for foundations, framing and roofing support. They offer superior strength, ease of fabrication and long-term value.



## AFFORDABLE PRICES

### LIGHT-GAUGE STEEL TRUSSES



The Benefits:

1. Affordable and durable
2. Quicker installation
3. Stronger compared to timber

### STEEL TUBES



1. Multipurpose
2. Strong
3. For all your welding needs

### DEFORMED BARS



1. Strong and Durable
2. High in tensile strength
3. Long-lasting buildings

# THERMAL AND VENTILATION PRODUCTS

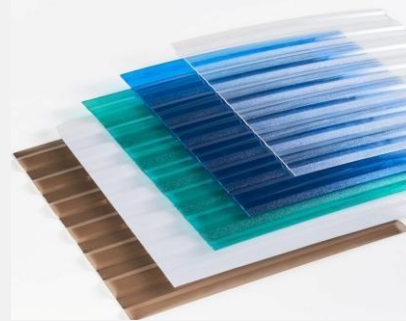
AFFORDABLE PRICES

## THERMAL INSULATION MATERIAL



Our roof insulation creates comfortable, energy-efficient interior by reflecting radiant heat, blocking conduction and absorbing sound.

## SKY LIGHTS



Our Translucent and Polycarbonate Sheets offer natural daylight solutions while offering UV-protection.

## CYCLONE EXTRACT FANS



Our roof ventilators provide powerful, eco-friendly airflow without electricity.



**CUSTOM SIZES, KEBS APPROVED**

[www.spacemabatiandsteel.co.ke](http://www.spacemabatiandsteel.co.ke)

# OTHER PRODUCTS

AFFORDABLE PRICES

## GYPSUM BOARD



Our Gypsum boards are the most common and affordable type for general interior use. They are fire and moisture rated.

## CHANNELS AND STUDS



Ideal for fast, clean and professional finishing in homes, offices and commercial spaces.

## CORUGATED ALUZINC (NON-COLOURED)



Budget friendly mabati featuring a classic corrugated profile. They have enhanced rust resistance, heat reflection and are easy to install.

CUSTOM SIZES, KEBS APPROVED

[www.spacemabatiandsteel.co.ke](http://www.spacemabatiandsteel.co.ke)



## OUR MISSION

- To deliver top-grade steel and roofing products that meet and exceed global standards.
- To provide efficient, reliable, and affordable solutions for the modern builder.
- To uphold excellence in customer service, quality and timely delivery.
- To continuously innovate and expand our product range to meet evolving market demands.

## OUR VISION

To lead the localization of construction material manufacturing in Kenya, fostering industrial independence, innovation and national pride

## OUR VALUES

- **Integrity:** We operate with total honesty and transparency in every transaction.
- **Quality:** Our products are engineered to withstand time and harsh environmental conditions.
- **Customer Focus:** We prioritize client needs by delivering tailored solutions and dependable support.
- **Innovation:** We embrace modern technology to improve local manufacturing and product performance.
- **Sustainability:** We promote eco-friendly practices to ensure long-term growth for Kenya's construction sector.

# CONTACT US HERE.

 **Website** : [www.spacemabatiandsteel.co.ke](http://www.spacemabatiandsteel.co.ke)

 **Address** : Kamakis Karuguru , Off Eastern Bypass

 **Email** : [sales@spacemabatiandsteel.co.ke](mailto:sales@spacemabatiandsteel.co.ke)

 **Phone** : 0119001111

